

...a better knowledge of infrastructure



Drones

- ✓ Twin-engine helicopters are expensive
- ✓ Urban areas drones are usefull
- ✓ Short flight range
- ✓ Permanent visual contact

17

...a better knowledge of infrastructure

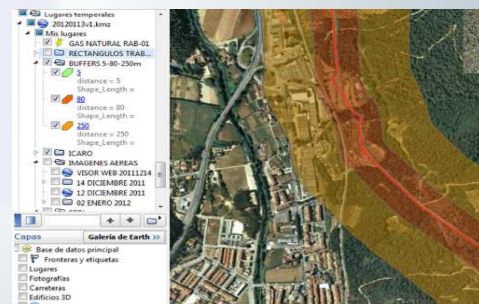


Findings

- ✓ Marker posts not inventoried
- ✓ Marker posts inventoried and not found
- ✓ Future control of third party works

Office work

- ✓ Data processing
- ✓ Storage Database
- ✓ Google Earth



18

...a better knowledge of infrastructure

The screenshot shows the 'jat consulting' software interface. On the left is a project tree with the following structure:

- gasNatural fenosa
- RAB: RAB-03
- Subtramo: Inserte aquí... [Buscar]
- PROYECTOS
 - IMAGENES
 - BUFFERS
 - SUBTRAMOS
 - SEÑALIZACION TEORICA
 - TRAZADO ICARO
 - LIMITE DE SUBTRAMOS
 - ELEMENTOS
 - FUENTES DE IGNICION
 - ANALISIS SEÑALIZACION
 - EDIFICIOS SINGULARES
 - CRUCES CON CURSO DE AGUA
 - ORTOFOTOGRAFIA
 - ZONA_NUEVA_ADSL
 - ORTOFOTOGRAFIA
 - ZONA_NUEVA_INT
 - ERP

The main map area displays an aerial view of a river with various infrastructure elements overlaid, including a red line representing the 'TRAZADO ICARO' and several green rectangular markers along the riverbank.

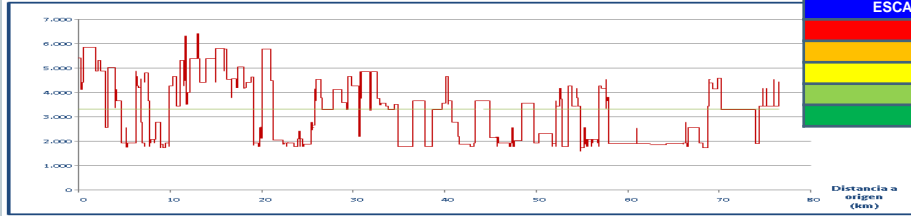
...a better knowledge of infrastructure

This screenshot is similar to the previous one but includes an 'Atributos' (Attributes) popup window and a zoomed-in inset. The popup window contains the following data:

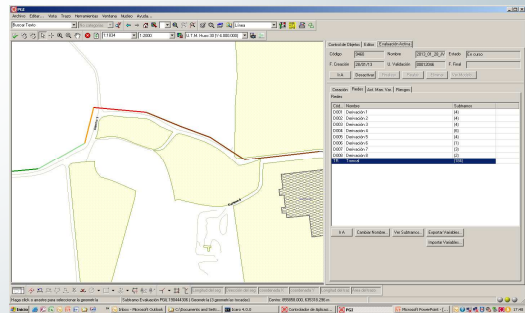
Atributos	
CODIGO	POSTE_SEÑALIZACION
ELEMENTO	IMAGEN
OBSERVACIONES	

An arrow points from the popup window to a zoomed-in inset of the map, which shows a close-up of a specific feature on the riverbank, circled in orange.

...a better knowledge of infrastructure



ESCALA	RIESGO RELATIVO
Red	> 6500
Orange	Entre 5000 y 6500
Yellow	Entre 3500 y 5000
Green	Entre 2000 y 3500
Blue	< 2000



3

Innovation in works supervision